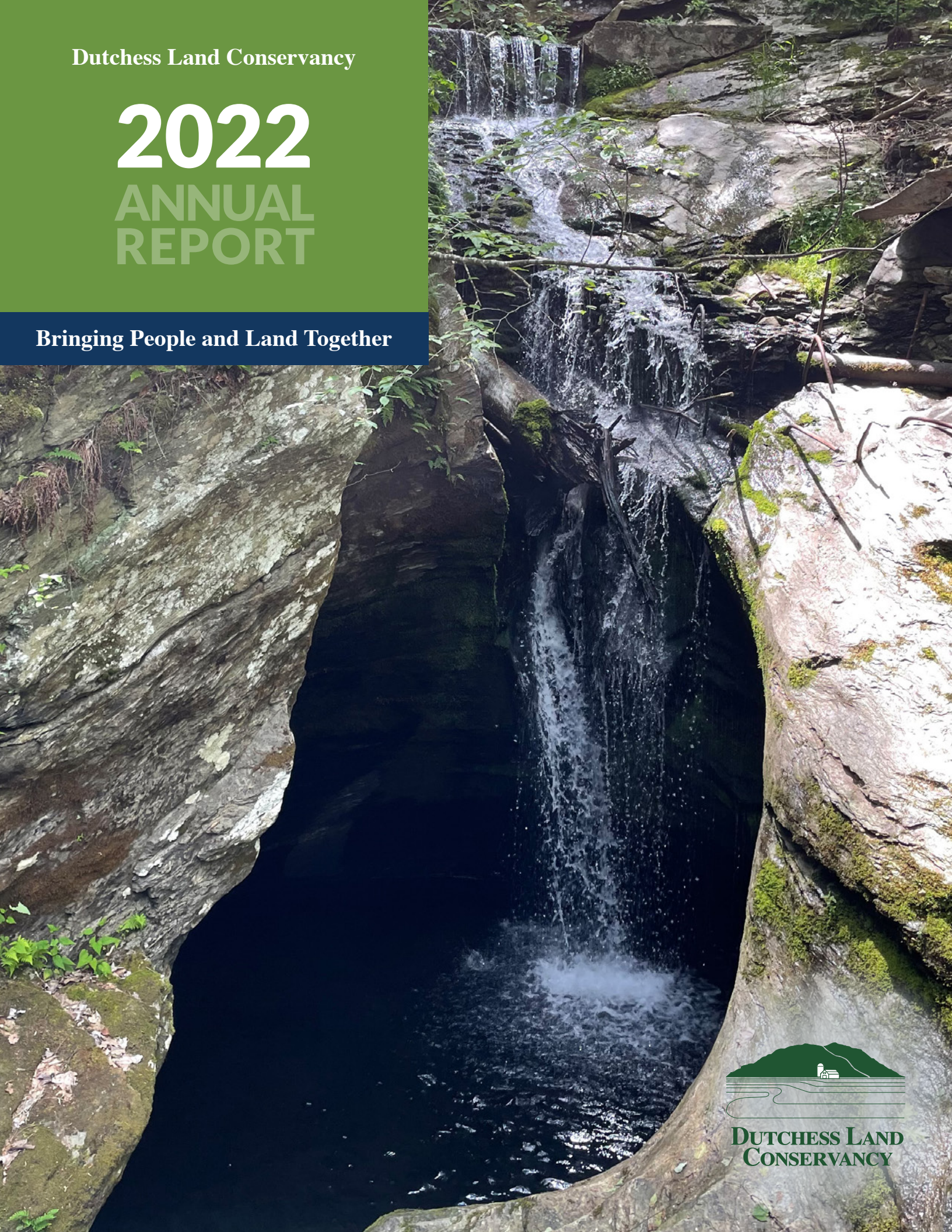


Dutchess Land Conservancy

2022 ANNUAL REPORT

Bringing People and Land Together



Our Mission

The Dutchess Land Conservancy (DLC) is dedicated to preserving the scenic, agricultural, and environmental resources of Dutchess County, New York, and the surrounding areas.

The DLC encourages sound, well-planned growth balanced with the conservation of our important natural resources and working landscapes to ensure healthy and vibrant communities for the benefit of all generations.

Through voluntary land transactions with private landowners, conservation land planning assistance, and public education, the DLC works to protect land while helping to channel new growth in ways which will reinforce our natural and agricultural landscapes and create balanced and sustainable communities.

At the DLC we believe that a healthy economy and a healthy environment go hand-in-hand.

Our Vision

As the DLC accomplishes its mission, the result of our work will help ensure:

- Traditional small villages and hamlets surrounded by large expanses of protected farm and forest land, with scenic views that inspire what people love most about this area.
- Sustainable working farms, supported by the community, that include the production of local, healthy foods, healthy forests and timber supplies, as a part of everyday life.
- Connected corridors that ensure diverse and well-functioning ecosystems that provide numerous benefits for human and habitat health and wellbeing including clean drinking water.
- The opportunity for people to enjoy the outdoors and appreciate important natural areas and open spaces which inspires their love of and connection to nature and reinforces their sense of home.



A Letter from the President



What an incredible year 2022 was for the DLC! It was a year of countless opportunities, mixed with a few challenges, and the fulfillment of some of our greatest dreams. From the launch of our volunteer program, to the protection of the awe inspiring Seven Wells property adjacent to the Dover Stone Church Preserve; from our awarding of scholarships to deserving Dutchess County 4-H kids, to the once-in-a-lifetime gift of more than 1,250 acres to create the DLC's first public preserve – the Jesse and Gayle Bontecou Wildlife Conservation Preserve; and finally, the generous donation from the Estate of Nancy Perkins of a place that will become the DLC's new and first-ever owned home and education and research facility - 2022 was a year of amazing firsts.

Our stewardship team began utilizing satellite imagery to aid in our monitoring of conservation easements. We launched a new website and greatly expanded our social media presence to help us get the word out about everything we're doing. We welcomed some new faces to our staff, and they can be seen out and about building trails, planting trees, leading hikes, and encouraging citizens to help with projects that help promote a healthy and welcoming environment.

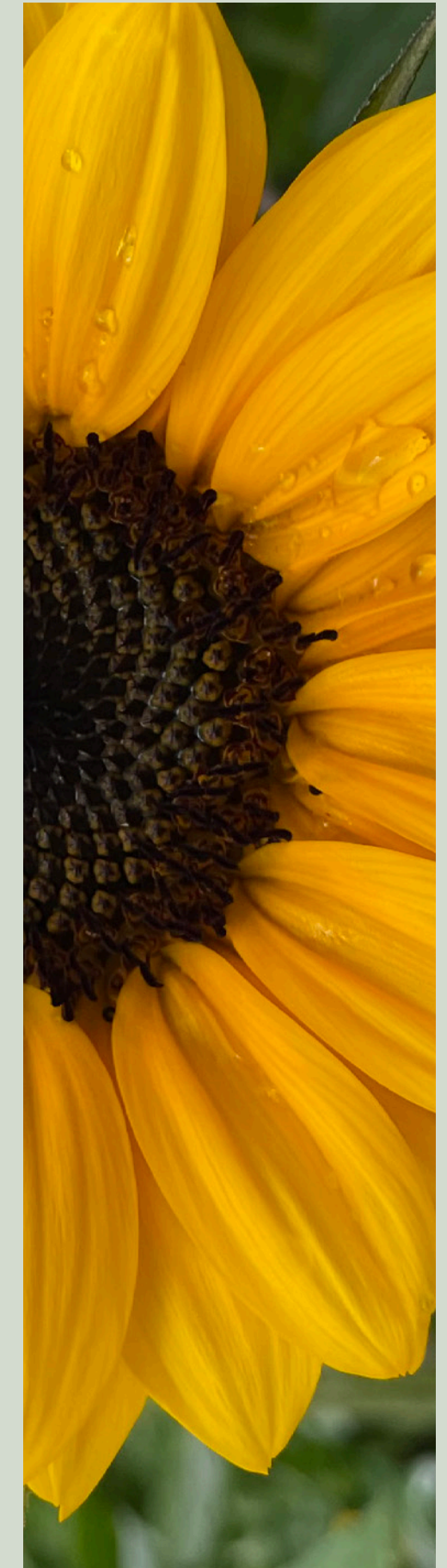
I couldn't be prouder of what a remarkable year we had in 2022. We achieved so much, and yet we all remain fully aware that there is much to be done to further protect and preserve the critical natural resources and picturesque views of our Dutchess County landscapes.

All of our accomplishments are thanks to you! Without your enthusiasm and devotion to our local farms, forests, scenic views, and environment, none of this would be possible. We are continually inspired by all that our supporters, volunteers, partners, event attendees, collaborators, and owners and stewards of our cherished land help us to achieve.

With appreciation,

Becky Thornton

President



Land Conservation

The DLC began conserving land in 1985 with the protection of 250 acres. Over the course of the ensuing 37 years, that number has grown to a staggering 46,000 acres of preserved land. This was an exceptionally noteworthy year for our conservation efforts as we forever preserved another 1,540 acres of important resource-rich land. In a notable achievement, much of the land we protected in 2022 is protected both for wildlife conservation and will eventually be available for public access and education.

The DLC is widely recognized on a national, state, regional, and local basis for creating tailored land preservation plans that perpetually safeguard each property's unique scenic, rural, and natural features. Our objectives are to ensure that our streams, wetlands, aquifers, ponds, and floodplains continue to provide clean drinking water. We strive to protect habitats where animals will continue to thrive and have the ability to freely move through connected corridors. Preservation of our vast contiguous forests prevents slope erosion, produces oxygen, and sequesters carbon, mitigating the effects of climate change. Conservation of the treasured farms of this area provide us with fresh local food and a balanced economy, while also offering majestic views that we all hold dear. We seek to protect open land for ourselves and for future generations to delight in the joys and wonders that the natural world affords.



THE JESSE AND GAYLE BONTECOU WILDLIFE CONSERVATION PRESERVE - 1,258 acres, Stanford and Washington

In late summer, the DLC received one of the most meaningful gifts in its 37-year history with the creation of the Jesse & Gayle Bontecou Wildlife Conservation Preserve in the towns of Washington and Stanford. Landowners Gayle and the late Jesse Bontecou donated 1,258 acres of critical wetland and forest habitat, open fields, wooded hillsides, streams, and Bontecou Lake. This incredible gift also increases an impressive band of more than 12,000 acres of contiguous protected land, creating a greater, safer corridor for countless species of wildlife. "This gift makes my eyes water with tears of immeasurable joy and gratitude," said DLC President Becky Thornton. "Jesse and Gayle so loved this land and its countless special and unique qualities. I cannot thank Gayle enough for her commitment to seeing through their desire to donate and protect this land as a forever preserve. We are also grateful to Scenic Hudson who holds a conservation easement on this land further ensuring its forever protection."



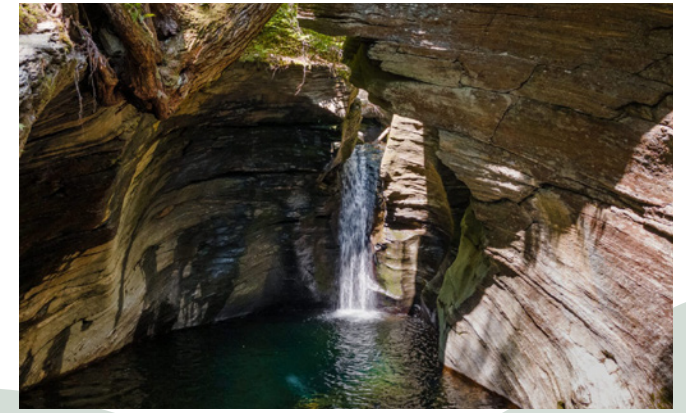
THE ANDERSON PROPERTY - 270 acres, Gallatin

A stunning view of the north slope of Stissing Mountain is the highlight of the twenty-seven acres owned by the Anderson family in Gallatin. Characterized by open farmland, tracts of forested land, streams, and an impressive wetland that serves as vital habitat for numerous migrating birds, the property is representative of the natural beauty of Columbia County. The land contains prime and statewide important farmland soils, as well as federal wetlands. It's location within the Roeliff-Jansen Kill watershed makes the property particularly valuable for conservation. Additionally, the woodlands are part of a contiguous forest and its protection will aid in providing a safe wildlife corridor.



THE ORVIS COMPANY - 21 acres, Washington

Majestic sycamores line a tributary to the East Branch of the Wappinger Creek, while towering shagbark hickories and red oaks punctuate the forest surrounding transitional shrublands on the 21 acres owned by the Orvis Company. Preserved forever by a conservation easement in fall 2022, the property adds to an impressive 274 acres previously protected by the Orvis Company. The upland deciduous forest and shrubby oldfield found on the property provide critical wildlife habitat. The property also boasts an impressive array of water resources, including federal wetlands and an important aquifer recharge area.



SEVEN WELLS PRESERVE - 163 acres, Dover

The spectacular waterfalls and pools of the Seven Wells property in Dover will be forever joined to the Dover Stone Church Preserve and its celebrated geologic marvels. The cool ravines contained within the Seven Wells Preserve provide habitat for an astounding breadth of fauna and flora unique in Dutchess County. Alongside its natural wonders, the expanded preserve will offer the public further opportunities to experience the outdoors in a wonderful and singular setting. DLC President Becky Thornton noted, "I have walked a lot of land in my time, and when you find a place as amazing as this, which has been carefully looked after for generations, you have to do all you can to protect it. We are truly grateful to the family who stewarded this land for so many years, and who made this transaction possible, so that others will also be able to enjoy and treasure this unique and historic landscape."



THE POMYKALA/WILLIAMS PROPERTY - 66 acres, Pleasant Valley

Sweeping views of central Dutchess County with winter vistas stretching as far as the Hudson Highlands are just one of the many amazing attributes of the sixty-six acres belonging to Matthew Pomykala and Elizabeth Williams. This property protected by the DLC in 2022 holds farmland that will stay in hay production, keeping agriculture front and center in a part of the county that is continually threatened by development. The remarkable ecological diversity of this property is stunning: forests, streams, steep slopes, and wetlands can be found here, each offering habitat for a host of species. Most notable is the inclusion of a portion of the Dutchess County Wetlands Significant Biodiversity Area, a network of wetland complexes that provide important habitat for a variety of uncommon amphibian, reptile, and bird species.

Stewardship of the Land

The amount of land the DLC protects grows each year. The ever-increasing number of easements under our care are thanks to the foresight of conservation-minded landowners who understand that land is worth preserving. With the growth in the number of easements comes the perpetual responsibility of assisting those landowners with the ongoing stewardship of their protected properties. We are honored to work with more than 400 environmentally conscious stewards who own land protected by conservation easements.

At present, the DLC holds 436 easements on more than 46,000 acres of land. Our stewardship staff utilizes the most up-to-date technology to aid them in their ever-growing

easement monitoring duties. Besides the recent implementation of ArcGIS Online mapping accounts, we began using remote imagery for the first time in 2022 to bolster our monitoring capacity and capabilities. Even with new technologies, easement monitoring still requires boots on the ground, and our stewardship staff logged over 300 miles in the course of monitoring one third of these easements. They also spent hours circling every easement in planes as part of our annual aerial monitoring.

The DLC's stewardship staff is called upon to review and evaluate many inquiries regarding the properties we protect. These inquiries increase as our total protected acreage rises, and in 2022 we responded to more than 130 questions and requests regarding the 436 easements we hold.



Photo Andrew Pelletier



The most important aspect of land stewardship belongs to the landowners themselves. They are the ones who own, maintain, and care for their land. It is their commitment to their stewardship responsibilities that allows us to continue to be guardians of Dutchess County's open spaces, working farms, waterways, and habitat corridors.

Education

A vital and growing part of the DLC's mission is involving the community in our work through our educational endeavors. These learning opportunities bring us into conversations with people about the breadth of our work, including the environment, best stewardship practices, and the importance of land protection. In 2022, we hosted 40 educational events, helping us to interact with an increasingly diverse audience of more than 2,300 people. Our broad range of programs included in-person events and online webinars, as well as many offerings for students and children. Here are some of the highlights:

DUTCHESS COUNTY 4-H SCHOLARSHIPS

Working with Dutchess County 4-H, we developed an all-new scholarship program designed to help individual 4-H youth with the costs associated with attending the Dutchess County Fair. In 2022, we were proud to award 22 such scholarships to recipients at the Fair.



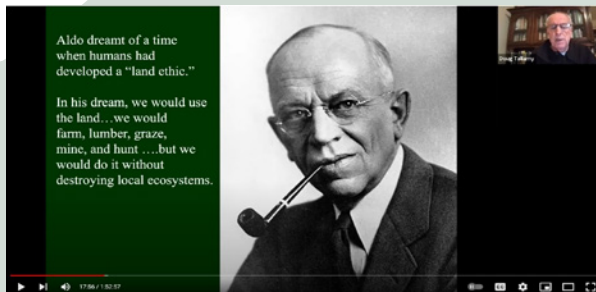
GEOLOGY WALK

We teamed with local geologist, Becky Nesel, for a volunteer-led walk at the Thompson Pond Preserve that revealed the billion-year-old rocks found on Stissing Mountain and the glacial origins of Thompson Pond.



DEER POND FARM PRESERVE WALK

We partnered with Connecticut Audubon for a land history walk through a DLC protected property straddling the New York/Connecticut state line.



EARTH MATTERS WINTER WEBINAR SERIES

We finished up our stellar first season of our winter webinar series in April and then began our second season in November, enabling us to connect with thousands of people in important dialogues about birds, gardening, soil, and more.



SOIL HEALTH WORKSHOP

The DLC teamed with the Columbia Land Conservancy for a Soil Health Workshop at the Cary Institute of Ecosystem Studies as part of our collaborative Down to Earth farmer education program.

IN-PERSON EVENTS

- Two Garden and Woods Walks at Wethersfield Estate & Garden
- Wetlands Talk at Plan Bee Farm & Brewery
- Learning Session on Online Tools for Conservation Planning
- Land History Presentation for the Millbrook Historical Society
- Farming in Dutchess Virtual Series on PDRs and Easements

PROGRAMS FOR STUDENTS & CHILDREN

- 4-H Special Interest Club on Land Conservation
- Pine Plains High School Career Fair
- Dover Middle and High School Earth Day Fair
- Millbrook School Environmental Science Class

WEBINARS

- Tree ID with the Cary Institute of Ecosystem Studies
- Dutchess Land Conservancy/ Columbia Land Conservancy Book Club
- Down to Earth with Rock Steady Farm



Volunteer & Community Science Program

In what was an inspiring inaugural year, the DLC launched an all-new initiative: a volunteer and community science program. Nearly 200 enthusiastic volunteers came out to improve public spaces in their communities and aid local environmental scientists with gathering data. Our many events brought together conservation-minded citizens to accomplish important work in Dutchess County. Here's a look at just a few of them:



BUTTERCUP FARM BIRD WALKS

The DLC teamed with Audubon NY for a series of bird walks at the Buttercup Farm Audubon Sanctuary where participants also learned about the eBird and Merlin Bird ID apps.

WHITLOCK PRESERVE TRAIL CLEAN-UP

Our first volunteer event brought us to the Whitlock Preserve in Stanfordville where a spirited group helped to build a new trail bridge, mark trails, plant native saplings and shrubs, and haul out trash.



BUTTERCUP FARM INVASIVES REMOVAL

We returned to Buttercup Farm in the fall for the removal of invasives from hedgerows, improving an important transitional habitat for many species of birds.

THOMPSON POND TRAIL WORK SERIES

We partnered with The Nature Conservancy at their Thompson Pond Preserve in Pine Plains for three trail work days. Volunteers aided in the construction of a new bridge and helped to re-blaze and clear an overgrown trail.



WAPPINGER CREEK TREE PLANTING

The DLC closed out its first year of volunteer opportunities with the planting of native trees and shrubs along the banks of Wappinger Creek at the Stanford Wildlife Preserve.



Photo: Andrew Pelletier

2022 Road Rally

Nearly 200 auto enthusiasts gathered for the second year for tours of DLC protected properties that included regional trivia and vintage car routes, as well as a visit to the Lime Rock Park racing track in nearby Lakeville, Connecticut, followed by a scrumptious lunch at the Tenmile Distillery. Funds raised by generous donors were nearly 20% above our goal.



Photos: Barbara Beatty Photography

2022 Fall Country Luncheon

A celebration of the gift of the Jesse and Gayle Bontecou Wildlife Conservation Preserve by Gayle and the late Jesse Bontecou was held in a field overlooking the stunning Bontecou Lake on a gorgeous fall day. More than 400 conservation-minded guests raised a glass to the Bontecous and generously donated funds to support the DLC's mission.



Photos: Barbara Beatty Photography

DLC by the Numbers



46,000+
Acres Protected



20,000+
Acres of Farmland Protected



40
Education Events In 2022

25
Towns with DLC Protected Properties



37
Years Protecting Land



20,000+
Acres of Forests Protected



190
Volunteers



88
Farmers/Landowner
Matches



5
Properties Protected in 2022



6,000+
Acres of Water Protected



300+
Miles Ground Monitoring
in 2022



436
Conservation Easements

Organizational Excellence

We are proud to be accredited by the Land Trust Accreditation Commission. The Land Trust Accreditation seal is a symbol of excellence, trust and permanence. It shows our commitment to national quality standards and that we have systems in place to keep to our promise of forever protecting the land under our care.



Thanks to the generous bequest of Nancy Perkins, and her daughter Jennifer Speers, the Dutchess Land Conservancy will have a new office, education and research space. We are hard at work adapting the space for its new use as our future home.

The DLC continues to follow the roadmap laid out in our 2021 Strategic Plan. The Plan is helping to guide our growth, launch exciting new initiatives, and accelerate and enhance our land protection efforts in the coming years.

Advocacy

The DLC continues to advocate for national, state, and local legislative efforts that provide support, incentives, and funding for our work. We encourage continued national support for the Farm Bill, the Land and Water Conservation Fund, the Forest Legacy Program, the Highlands Conservation Act, and the 30 by 30 Conservation Initiative.

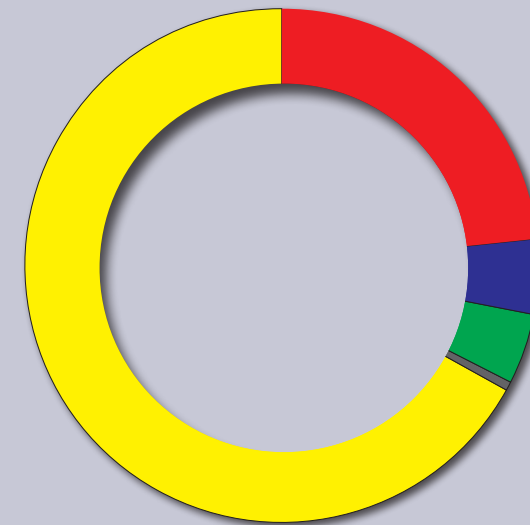


Photo: Sarah Blodgett



Financials

2022 REVENUES



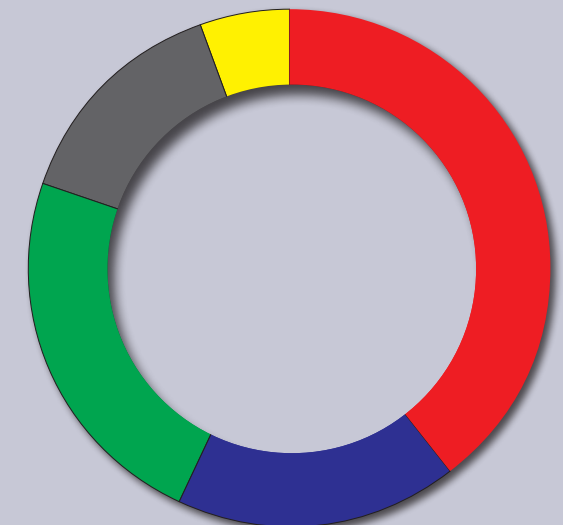
Individual Giving	\$2,141,136
Grants*	\$ 440,927
Special Events	\$ 399,288
Miscellaneous	\$ 55,171
Non-Operating Revenue/Loss**	\$6,125,302

Total \$9,161,824

* Includes Purchase of Development Rights

** Includes Gifts of Property

2022 EXPENSES



Land Conservation*	\$ 911,042
Stewardship	\$ 403,719
Education	\$ 538,498
Administration	\$ 328,900
Development/Marketing	\$ 122,880

Total \$2,305,039

* Includes Purchase of Development Rights

Board of Directors

- Chairman**
Timothy Mayhew
- Vice-Chairmen**
Christopher L. Mann
Oakleigh Thorne
- Secretary**
Olivia van Melle Kamp*
- Treasurer**
Nancy N. Hathaway
Steven Benardete
Nicholas C. Bienstock
Timothy M. Bontecou
Candace Browning-Platt
Hannah F. Buchan
Sarah Lyons Chase
Peter Coon
Wolcott B. Dunham, Jr.
Leslie Farhangi
Patricia Farman-Farmaian
Thomas M. Flexner
Thomas W. Keesee
Fernanda M. Kellogg
Brad Kendall
Thomas L. Newberry
Terry Regan
Eric W. Roberts
Rebecca M. Seaman
David R. Stack
Peter Tcherepnine
Liselotte Vince
Kathleen C. Weathers
Fred Whitridge, Jr.
Ross Williams

- Chairman Emeriti**
Leslie B. Barclay* 1985-87
Olivia van Melle Kamp* 1987-88
Charles P. Shaw 1988-90
Farnham F. Collins* 1990-92
Nancy N. Hathaway 1992-97
Richard A. Kimball, 1997-05
Timothy M. Bontecou 2005-14
Rebecca M. Seaman 2014-22

- Director Emeriti**
John P. Banning Jr. 2011-22
David R. Tetor 1989-22



Advisory Council Staff

- | | |
|-------------------------|---|
| Kathleen V. Augustine | Rebecca E. C. Thornton, President |
| Gayle Bontecou | Art Collings, Vice President for Conservation & Stewardship |
| Russell L. Carson | Julie Hart, Education Director |
| David C. Clapp | Erin Hoagland, Conservation Director |
| Farnham F. Collins* | Karen Karis, Development Director |
| Everett R. Cook, II | Sharon Zampko, Accounting and Business Director |
| Wendy C. Curtis | Emily Kelderhouse, Land Project Manager |
| Willem de Vogel | Jackie LaPlante, Stewardship Manager |
| Eliza Dyson | Barbara Rizek-McGuckin, Development and Program Associate |
| Frank Martucci | Doug Ohlandt, Communications Manager |
| Marta Nottebohm | Georgina Schaeffer, Editor |
| Simon C. Roosevelt | Brian Straniti, Outreach and Engagement Manager |
| Gilbert P. Schafer, III | Sandra Tanner, Office Manager |
| Dorothy W. Sprague | Chris Chinkan, Stewardship Associate |
| | Vinny Gaglioti, Property & Grounds Assistant |
| | Kara-Lyn Moran, Land Steward Intern |

*Founder

Stewards of the Land

Stewards of the land are essential partners of the DLC. They are the ones who manage and steward their protected properties now and into the future.

- Mr. Stephen Abel & Family - O. Vincent Abel Inc.
Mr. and Mrs. Munir Abu-Haidar
Mr. and Mrs. Ramzi Abu-Haidar
Ms. Claire Ackad
Mrs. Binti Ackley
Mr. Armin Brand Allen
Mr. Frederick Allen and Ms. Erica De Mane
Ms. Saralyn Allen
Mr. David Anderson
Andri & Stef RE, LLC
Anra's Nest, LLC
Mr. James Archer
Mr. and Mrs. Jon Arnason
Ms. Eve Ashcraft
Mr. and Mrs. Ronald Atkins
Mr. Al Attara - 2Attara Foundation, Inc.
Mr. Jonathan Auerbach
Ms. Kathleen Vuillet Augustine - Sunnyside Farm, LLC
Mr. and Mrs. Jack Auspitz
Mr. and Mrs. Frederick Babcock - F.H.B. Resources, LLC
Mr. and Mrs. John B. Babcock
Mr. Aldo Badini
Mr. Elton W. Bailey, Jr.
Mr. David Bain
Mr. and Mrs. Jack Banning
Mr. and Mrs. Lee Barba
Mr. and Mrs. Rutgers Barclay
Barnes Irrevocable Trust
Mr. Richard Barrale
Mr. Michael Bassett and Mr. Darren Henault
Mr. Jeremy Bean and Ms. Alice Benson
Mr. and Mrs. Jonathan Beatson-Hird
Ms. Karen Bechtel
Mr. Justin Beeber
Mr. and Mrs. Steven Benardete
Mr. David Berger and Ms. Tracey Altman
Mr. Steven Berger and Ms. Cynthia Wainwright
Mr. J. Addison Berkey, III
Ms. Stephanie Bernheim
Mr. and Mrs. Richard Biezyński
Ms. Kathryn Bigelow - 4 Legs Good Trust
Mr. and Mrs. James Bisceglia
Mr. and Mrs. Gerald Bland



- | | |
|--|---|
| Mr. Scott Blasdell - Apple Eden, LLC | Mr. and Mrs. Michael Burdis |
| Mr. David Bledin | Mr. John Burke |
| Mr. and Mrs. Eric Bommer - Deep Hollow Game Preserve LLC | Mr. and Mrs. Jeffrey Cady |
| Mr. and Mrs. Donald Booth | Dr. Peter Caldwell and Ms. Jane Waters |
| Mr. and Mrs. Timothy A. Boroughs | Ms. Linda Caldwell |
| Mr. and Mrs. Matthew Borsch | Ms. Lucy Calhoun |
| Mr. Thomas Boucher | Dr. Nancy Camp |
| Ms. Katherine Boyer | Mr. Joel Canter |
| Mr. and Mrs. Paul Brandow | Mr. and Mrs. Richard I. Cantor |
| Mr. and Mrs. Lance Braunstein | Mr. Peter Capell |
| Brevi Holdings, LLC | Mrs. Ava Carberry |
| Mr. William Bricker | Cary Institute of Ecosystem Studies |
| Mr. Cameron Keith Brodie | Mr. and Mrs. Paul Caseiras |
| Mr. and Mrs. Daniel Brodsky | Casparkill Game Club, Inc. |
| Mr. and Mrs. Hobson Brown | Mr. and Mrs. Charles Cassara |
| Mr. John Bruno - Oak Summit Vineyard, Inc. | Dr. Carol Caton |
| Bryndle Valley, LLC | Ms. Mukti Nurya Cerio |
| Mr. and Mrs. Duke Buchan, III - Flint Hill, LLC | Mrs. Jane Chaffee |
| Dr. and Mrs. Arnold Bucove | Mr. Michael Chamberlin and Ms. Margaret O'Brien |
| Dr. Theodora S. Budnik | Mr. and Mrs. William Chappell, Jr. |
| Mr. Bartle Bull II | Dr. Stephen Chernay |

Mr. Craig Chesley and Ms. Eileen Naughton
 Mr. and Mrs. Michael Citrin
 Clark Hill Farm, Inc./Country Lands
 Clark Hill, LLC
 Dr. Amory Y. Clarke
 Mr. and Mrs. Eliot C. Clarke
 Mr. Eliot C.L. Clarke
 CloveBrook Farm, LLC
 Mr. and Mrs. Richard Coffin
 Mrs. Cynthia Cogswell
 Mr. and Mrs. John Colgate, Jr.
 Mr. and Mrs. Richard Collier
 Mr. and Mrs. Farnham F. Collins
 Columbia Land Conservancy
 Common Fire Foundation
 Mr. and Mrs. Richard Conniff
 Connecticut Audubon Society, Inc.
 The Conservation and Preservation
 Association, L.P.
 Mr. and Mrs. Everett R. Cook, II
 Mr. and Mrs. Stanley G. Cooke
 Mr. and Mrs. John Coppel
 Mr. and Mrs. Peter S. Corbin
 Mrs. Cynthia Cornell
 Mr. David Cote - Sunny River, LLC
 CRE Fiduciary Services Inc.
 Crescent Road, LLC
 Crestcram LLC
 Mr. Thomas Cui
 Mr. and Mrs. Kevin Cunningham
 Ms. Ellen W. Curtis Boiselle
 Mr. Jephtha P. Curtis
 Ms. Sarah M. Curtis
 Ms. Catharine Cusack
 Mr. and Mrs. John Danilovich
 Ms. Sarah Darcy
 Mr. David Dase and Ms. Jacqueline Flake
 Mr. G.W. Davison-Ackley
 Mr. Thomas Dawber and Ms. Louisa Levison
 Ms. Marina Dayton - 767 Bangall Amenia, LLC
 Mr. and Mrs. Thomas Dee
 Mr. Theo De Gunzburg and Ms. Hallie Bonnar
 Mr. David Dembo
 Mrs. Margot Dembo
 Mr. James Devanney and Ms. Christy Parsons
 Mr. Willem de Vogel
 Diamond Trails Properties, LLC
 Mr. Andrew Dietderich and Ms. Carina Liebeknecht
 The Doar Family - John Doar Administrative Trust
 Ms. Diandra de Morrell Douglas - Carpe Diem Farm, LLC



Photo: Sarah Blodgett

Town of Dover
 Ms. Bella Downey
 Mr. Edward Downey
 Ms. Josephine P. Downey
 Mr. Leo Downey
 Mr. Christopher Drago
 Mr. and Mrs. Dana Drury
 Ms. Constance I. DuHamel and Ms. Carolyn B. Handler
 Mr. and Mrs. Donald Duncan - Duncandale Farm, Inc.
 Mr. and Mrs. Wolcott B. Dunham, Jr.
 Mr. and Mrs. Andrew Durbridge
 Ms. Janet Durrschmidt
 Ms. Mary Dusenbury
 Dutchess Views Farms, Inc.
 Dr. Anne Dyson
 Mr. and Mrs. John Dyson
 Mr. and Mrs. Michael Edmeades
 Mr. and Mrs. James M. Edwards - Miller Pond Farm, Inc.
 Mr. William Ehrlich and Ms. Ruth Lloyds
 Mr. and Mrs. Richard Ellenson
 Mr. and Mrs. Gordon Elliott
 Ms. Patricia Ericson
 Mrs. R.B. Etherington
 Mr. and Mrs. Michael Ettinger
 Mr. and Mrs. Alexander Ewing
 Ms. Leslie Farhangi and Mr. John Tuke
 Mr. and Mrs. Adolfo Farias
 Mr. and Mrs. Alexander Farman-Farmaian
 Mr. John Feeney and Ms. Shiuan Chen
 Ms. Judy Fehlig
 Mr. Stephen Ferdinando and Ms. Susan Sarro
 Ferme Farm, LLC
 Mr. and Mrs. Massimo Ferragamo
 Ms. Michele Ferraro and Ms. Kathleen Weathers
 Mr. and Mrs. Richard Fischer
 Mr. and Mrs. Arnold Fisher

Mr. John Fitzgerald and Ms. Susana Sofia Millares
 Mr. and Mrs. Peter Fitzgerald
 Mr. and Mrs. James Fitzpatrick
 Mr. and Mrs. Thomas Flexner
 Mr. and Mrs. Charles Floe
 Mr. James Florack and Ms. Tracy Kimmel
 Mr. and Mrs. Hadley Ford
 Mr. and Mrs. John Forelle
 Ms. Kathleen Foster - Morse Hill Properties, LLC
 Mr. Albert Francke
 Mr. and Mrs. Frederick Frank
 Franklin-Millbrook LLC
 Mr. and Mrs. Sanford Friedman
 Mr. and Mrs. Christopher Gallagher
 Ms. Kathleen Gallagher
 Mr. Peter Gallagher
 Mr. Scot Galliher - Silver Mountain Hay, LLC
 Mr. and Mrs. Richard Gallo
 Dr. Linda Lewis and Mr. Gary Gambuti
 Mr. David Garbasz and Ms. Joanna Barsh
 Mr. and Mrs. Richard Gardiner
 Mr. Phillip Gellert
 Mr. and Mrs. Jeffrey A. Giardina - CRJ Land Associates
 Gibraltar, Inc.
 Dr. Ruth Moulton Gilbert
 Mr. Russell Gioiella, Esq.
 Mr. and Mrs. Christopher Goldsmith
 Mr. Max Goodwin - Silvernails LLC
 Grace Paul Trust
 Mrs. Mary Graf - Round Pond Farm, LLC
 Mr. and Mrs. Peter Gray
 Mr. Jonathan Greenburg and Ms. Elizabeth Ely
 Mr. and Mrs. James Greig
 Mr. Bruce Grivetti and Mr. Paul Feuerman

Mr. and Mrs. Joseph Gubernick
 Col. and Mrs. Robert Gunther
 Mr. and Mrs. Jeffrey Gural
 Mr. Thomas Hahn, Jr.
 Mr. Thomas Hahn, Sr.
 Mr. Daryl Hall
 Ms. Julia Hall
 Mr. Jens Peter Hansen and Ms. Elena Feliciano
 Mr. Geoffrey Harrison and Ms. Julie Jones
 Mr. and Mrs. Jason Hart
 Mr. and Mrs. David R. Hathaway
 Hay Ho Trust
 Mr. Gary Hattem and Mr. Frazier Holloway
 Mr. David Head
 Mr. and Mrs. Andrew Heaney
 Heathcote Real Estate LLC
 Mr. Robert Henderson
 Mr. and Mrs. William F. Henze, II
 Mr. Robert Hermann and Ms. Karen Kennedy-Hermann
 Mr. John Hettlinger - 85 Shady Dell Road, LLC
 Mr. and Mrs. John Hettlinger
 Mr. and Mrs. William Hettlinger - Glen Arden, LLC
 Mr. and Mrs. William Hewitt
 Highcroft, LLC
 Mr. Alan Hilliker and Ms. Vivien Liu
 Mr. John Hoffman and Mr. Michael McCalman
 Homeland Foundation, Inc.
 Mr. and Mrs. Mark Honigsberg
 Mr. Min Htoo and Ms. Sherene Ng
 Mr. and Mrs. James Hunt
 Mr. and Mrs. Nicolas Ibanez
 Mr. and Mrs. John Ike
 Dr. Gerald Imber
 Mr. David Itkin and Ms. Valerie Itkin, New Bristol Farm
 Mr. Daniel Jackson
 Mr. Verne Jackson and Sons
 Mr. Michael Jacoff and Ms. Jeanne Vanecko
 Jada Farms LLC
 Mr. and Mrs. Matthew James
 Mr. Andrew Jarecki
 Ms. Sara Joannides
 Mr. Robert K. Johnson
 Mr. and Mrs. Paul Johnston
 Mr. Paul Tudor Jones, II
 Mr. and Mrs. Allan Jones
 Ms. Sarah T. Jones
 Mr. Jonathan Kagan - Uphill Horse, LLC
 Mr. and Mrs. William Kahane
 Ms. Abbey Kalina Straus and Ms. Lydia Nadel - Kalina Farm, LLC
 Mr. and Mrs. Christopher Karpinsky

Mr. Roger Kass and Ms. Andrea VanBeuren
 Mr. and Mrs. Michael Katz
 Mr. and Mrs. Stephen C. Kaye
 Mr. and Mrs. Thomas W. Keesee
 Ms. Fernanda Kellogg and Mr. Kirk Henckels
 Ms. Florance Nepfel Kelly and Mr. William Kelly, Jr.
 Mr. Daniel Kent and Ms. Jessica Adcock
 Ms. Beverley Kerzner
 Mr. James Kiggen and Ms. Ani Shaker
 Mr. and Mrs. Donald Kimelman
 Dr. Neil Khilnani and Ms. Joyce Kim
 Mr. Soohyung Kim - Link Farm, LLC
 Mr. and Mrs. Richard A. Kimball, Jr.
 Mr. and Mrs. John Kimm
 Estate of Mrs. Elise Kinkead
 Mr. Mark Kirby and Ms. Erin Owens
 Mr. Roger W. Kirby
 Mr. and Mrs. Charles Klein
 Mr. Eral Gokgol-Kline - The Vale Fox Distillery, LLC
 Mr. and Mrs. John Klopp - Smithfield Farms, LLC
 Klose Family Farm, LLC - Christopher, Kevin, Deborah and Nick Klose
 Ms. Kathleen Knight
 Ms. Alexandra Koepfel
 Mr. and Mrs. William Koff
 Mr. Bruce Kraus
 Mr. and Mrs. Peter Kraus
 Mr. and Mrs. James Kravchuk
 Mr. Henry Kravis
 Mr. and Mrs. Mark Kuras
 Mr. and Mrs. Neal Kusnetz
 Mr. Neil Kutner and Ms. Naomi Grabel
 Town of LaGrange
 Mr. Evangelos Lamprou - Humble Hands LLC
 Mrs. Christina Lang-Assael
 Ms. Sophia Lang-Assael
 Mr. and Mrs. Jonathan Lanman - Trumbull Home, LLC
 Mr. and Mrs. Douglas Larson
 Mr. and Mrs. Andrew Lazarus
 Mr. John Lazarus
 Ms. Eva Christina Lazarus
 Mr. and Mrs. Thomas Leahy
 Mr. and Mrs. Michael Jr. LeConey
 Mr. and Mrs. Bernie Leighton
 Mr. and Mrs. E. Deane Leonard
 Mr. and Mrs. Michael S. Levin
 Mr. and Mrs. Eric Levine
 Mr. and Mrs. Michael Linck
 Mrs. Elizabeth Lindsay
 Mr. Alfred G. Lippincott
 Ms. Aura Lippincott and Mr. William M. Cawley, Jr.

Mr. Andrew Lipsky and Ms. Holly Kelly
 Mr. Bruce Lisman
 Lithgow Land Trust
 Ms. Adrienne Lobel
 Mr. Douglas Londal
 Mr. Jonathan Lott and Ms. Diana Al-Hadid - Alottaland LLC
 Mr. Dan Lufkin
 Mr. and Mrs. Douglas Luke
 Lyle LLC
 Mr. and Mrs. James Mack - Silvernails Farm LLC
 Mr. and Mrs. Donald MacLean - Thompson-Finch Farm, LLC
 Mr. Andrew Maggio
 Dr. and Mrs. Louis J. Maggio
 Mrs. Lou Ann Malozzi
 Mr. and Mrs. John Mandel, Jr.
 Mr. and Mrs. Theodore Mander
 Mr. Peter C. Mann and Ms. Diane Wheeler
 Mr. Joseph Manne - ND-4, LLC
 Dr. Monte J. Marder
 Marist College
 Ms. Lenore Maroney and Ms. Dorothy Distel
 Mr. David J. Marshall
 Mr. David Marshall - Marshall's Outback Property, LLC
 Mr. and Mrs. Timothy Marshall - Bos Haven Farms, Inc.
 Mr. John Frederick Martin
 Mr. and Mrs. Frank Martucci - East Heartland Corp.
 Maryherms, LLC
 Mr. Douglas Maxwell and Mr. Christopher Dierig
 Mr. and Mrs. Timothy Mayhew
 Mr. James McCarthy - Cloverbrook Farm, Inc.
 Mrs. Joan McCarthy - Cloverbrook Farm, Inc.
 Estate of Ms. Elizabeth McClintock
 Mr. and Mrs. Douglas McCorkle - My Favorite Closet, LLC
 Ms. Erinn McGurn
 Mr. Gaelan McKenna
 Mr. and Mrs. Michael McMahan
 Mrs. Barbara McNulty
 Mr. and Mrs. Charles Mead - Mead Orchards, LLC
 Mr. and Mrs. Sidney Mead - Mead Orchards, LLC
 MEC, Inc.
 Mrs. Christina Megill and Mr. Daniel Zelman
 Mr. Hans Joerg Meili
 Meili Family - Craig, Joerg, Barbara and Carla - Arrowhead Hills Partnership, LP
 Mr. James Melcher - JLAA LLC
 Dr. and Mrs. Arthur Menken
 Mr. and Mrs. Guy Merison
 Mr. Philip Mershon

Mr. and Mrs. Hamilton W. Meserve
 Mr. and Mrs. Robert Messerich
 Mr. William Metzger -
 WCM Holdings, LLC
 Mrs. Barbara Meyer
 Mr. and Mrs. Scott Meyer
 Bette Midler Family Trust
 Mr. Patrick Miglio
 Mr. and Mrs. Frank Migliorelli
 Mr. Kenneth Migliorelli
 Milan Rural Space Group, LLC
 Millbrook Land Associates, LLC
 Millbrook Rod and Gun Club
 Millbrook School
 Millbrook Vineyards and Winery, Inc.
 Mr. Todd Jay Mitty and
 Ms. Jung Min Lee
 MMS Conservancy
 Monell Properties, LLC
 Ms. Eileen M. Moore
 Mr. and Mrs. Larry Moran
 Ms. Kelly A. Morgan
 Mr. Joshua Morgenthau -
 Fishkill Farms Realty Associates, LLC
 Mr. and Mrs. Robert Morgenthau -
 Fishkill Farms Realty Associates, LLC
 Mr. Bernard Morrison and
 Mr. Leonard Morrison -
 Silver Mountain Farm Partnership
 Mr. Brian Murphy and
 Mr. Kevin Murphy
 Mr. and Mrs. Michael Murphy
 Mr. Glenn Murphy
 Ms. Lynn Murphy -
 Deer Hollow Farm, LLC
 Mr. Ronald Mustello
 Mr. Robert Nathan -
 Federal Square Farm LLC
 Mr. James Nederlander - Clarence
 and Peaches Property LLC
 NE Family Holdings, LLC
 Mr. Joshua Nelson and Mr. Gray Scott
 Ms. Nancy Nesle and Mr. Allan Herrick
 New Deal Development, Inc.
 New Horizon Resources, Inc.
 Mr. Ben Nickoll - Route 199 LLC
 NML Wilds LLC
 North Meadows Associates, Ltd.
 North Dutchess Properties, Inc.
 Northern Dutchess Properties
 Northwest Farms, Inc.
 Dr. and Mrs. Fernando Nottebohm
 Oblong Land Conservancy, Inc.
 Oblong Valley, LLC
 Mr. and Mrs. Dan O'Brien
 Mr. Robert O'Brien and
 Mr. Kevin O'Brien
 Mrs. Louise O'Keefe
 Mr. Patrick O'Leary - Glenmore
 Farms, Inc.

Mr. and Mrs. Daniel Odell
 Mr. and Mrs. David Offensend -
 Barlow Farm, LLC
 Mr. Ryan Oksenhendler and Ms.
 Lauren Wolfenden
 Old Dalton Farm, LLC
 Mr. Stuart O'Neill
 The Orvis Co. Inc. - Sandanona
 Mr. Randall Oser - Randallo, Inc.
 The Osofsky Family -
 Schultz Hill Farms, LLC
 Mr. and Mrs. Gerald Ottaway
 Mr. Ryan Packard and
 Ms. Elizabeth Owens
 Mr. Barclay Palmer and
 Ms. Dana Cowin
 Pardess Center for Jewish Life, Inc.
 Mr. Rodney Paterson and
 Ms. Susan Heath
 Mrs. Ruth Peale
 Mr. Jeremy Peele - Silvernails, LLC
 and Wiltsie Bridge, LLC
 Mr. and Mrs. George Perkins
 Mr. and Mrs. Robert Perkins
 Mr. Stefan Peter
 Mr. and Mrs. Eric C. Petersen
 Ms. Florence Peyrelongue
 Mr. and Mrs. Guy Peyrelongue
 PFORZFARM, LLC
 Mr. Bruce Phipps and
 Ms. Miriam Tannen
 Mr. and Mrs. Thomas Pickering
 Mr. and Mrs. Neil Pierson
 Mr. and Mrs. James Pinto
 Mr. and Mrs. Anthony Pizzella
 Ms. Candance Platt
 Mr. Ian Plimsoll and Ms. Lisa Mehling
 Ms. Jennifer Plotnick
 Mr. and Mrs. Robert Podris
 Mr. Matthew Pomykala and
 Mrs. Elizabeth Williams
 Ms. Nicole Potter and
 Mr. Daniel Potter
 Mr. and Mrs. Henry H. Prieger
 Ms. Lyndon Preston
 Mr. Carl Pucci and
 Ms. Barbara Salovich
 Mr. and Mrs. Anthony Pulver
 Mr. and Mrs. John Pulver and
 Family - Pulver Farm, Inc.
 Mr. and Mrs. Augustus Putnam
 Mr. Taylor Pyne
 Mr. and Mrs. Jack Quartararo
 Mr. Paul Quartararo
 Ms. Theresa Quartararo
 Mr. Robert Quinlan -
 Hiddenhurst Farm, LLC
 Mr. Sheeraz Qureshi
 Mr. Randall Ramusack and
 Ms. Amy Chase Gulden

Mr. and Mrs. Richard Rapaport -
 Shekomeko Hill Farm LLC
 Mr. Alexander Reese -
 Obercreek Development, LLC
 Religious of the Sacred Heart
 Mr. and Mrs. John N. Regan, Jr.
 Mr. Maurice Regan -
 Samantha Next Door, LLC
 Mr. and Mrs. John Reid
 Mr. Michael Rena
 Mr. and Mrs. Justin Rebideau
 Riga Property LLC
 Mr. and Mrs. Peter Riva
 Mr. Eric Roberts
 Mr. John Robinson -
 Red Farmhouse, LLC
 Mr. and Mrs. John Rockwell
 Rocky Reef Farm, LLC
 Ms. Phyllis Roosa
 Mr. and Mrs. Simon Roosevelt
 Mr. and Mrs. Robert Rose
 Mr. David Rosenberg and
 Ms. Robyn Cutler
 Mr. and Mrs. Richard Rosenberger
 Mr. and Mrs. Eric Rosenfeld
 Mr. Neal Rosenthal and
 Kerry Madigan
 Mr. Daniel Rothvoss Jr.
 Mr. Daniel Rothvoss, Sr. and
 Mrs. Rosalie Rothvoss -
 H. Rothvoss & Sons, Inc.
 Route 44 Dutchess LLC
 Mr. Lawrence Rubin
 Mr. and Mrs. Christopher Rutherford
 Mr. and Mrs. N. Alexander
 Saint-Amand
 Saint Anna Housing
 Saint Peters Church
 Saint Simeon Foundation, Inc.
 Saint Simeon II Housing
 Mrs. Cynthia Salzhauser
 Sam's Place of Millbrook, LLC -
 Ann Madden
 Samuel F.B. Morse Historic Site
 Mr. and Mrs. George Sanderson
 Dr. Thomas Sanford
 Mr. and Mrs. Andrew Santandra
 Mr. William Santella
 Mr. and Mrs. Russell Sarachek
 Mrs. Molly Schaefer
 Ms. Nancy Schaefer
 Mr. and Mrs. Paul Schaefer
 Mr. Theodore Schiffman
 Mr. and Mrs. Benjamin Schiller
 Mr. and Mrs. Vern Schrom
 Mr. Henry Schwartz and
 Ms. Beverly Semmes
 Mr. John Schwartz
 Scratchy Lane, LLC



Ms. Roseanne Scuola
 Mr. and Mrs. Bryant Seaman
 Estate of Olive Seaman
 146 Seeley Road, LLC
 Mr. Philippe Segalot
 Mr. and Mrs. Robin Sen
 Mr. Ottavio Serena di Lapigio
 Mrs. Elizabeth Shafer
 Mr. and Mrs. Walter Shapiro
 Mr. and Mrs. Andrew Sheeley
 Shekomeko, LLC
 Shekomeko Village Company, Inc.
 Mr. and Mrs. Allan Shope
 465 Shunpike LLC
 Mr. Merrill Sindler
 Sisters of Charity of St. Vincent De Paul
 Mr. Allen Sleight
 Mr. Elliott Sleight
 Mr. Daniel Slott
 Mr. Henry Smedley and Ms. Kathryn Chow
 Mr. Kevin Smith and Mr. Greg Smith
 Mr. and Mrs. Leon Smith
 Mr. Douglas Smyth
 Mrs. Olga Smyth
 South Amenia Partners, LLC
 Ms. Betsey Klare Speeter
 Sprout Creek Farm, Inc.
 Ms. Judith H. Stanley
 Mr. Jeffrey Stark
 Ms. Bonnie Stedt
 Mr. and Mrs. Larry Steel -
 Great Song Farm
 Mr. Julian Steinberg and Ms. Abigail Kazam
 Mr. John Steiner
 Mrs. Sarah T. Stephenson
 Mr. David Stewart
 Mr. and Mrs. Donald Stickle, Jr.

Mr. Chauncey Stillman
 Mr. and Mrs. Henry Stolzman
 Mr. and Mrs. Allan Streichler -
 Three Pond Farm, LLC
 Stuart Properties Corporation
 Mr. and Mrs. Peter Sturges
 Mr. and Mrs. Robert Suter
 Ms. Cari Swanson
 Ms. Korin Swanson
 Mr. Gregory Swinehart and
 Ms. Mitra Walter
 Ms. Anna Syrkis
 Mr. Robert Tannenhauser
 Mr. Brook Taube
 Mr. and Mrs. Tucker Taylor
 Mr. and Mrs. Peter Tcherepnine
 T.G.L. Inc. - Laufred Farms
 Mr. David Thomas and
 Ms. Joanne Ramos - Belowhen, LLC
 Ms. Katrina Thomas
 Mr. Oakleigh Thorne
 Mr. Oakleigh B. Thorne
 Mr. John Tinker
 Mr. David Tisch -
 DGT Millbrook Holdings, LLC
 Mr. and Mrs. John C. R. Tompkins
 Mr. Juan Torres
 Ms. Marylou Tortorello -
 13 Hands Equine Rescue, Inc.
 To Wit Farm, LLC
 Mr. and Mrs. Albert Trezza
 Mr. and Mrs. Michael Trimble
 Trout Restoration, Inc.
 Troutbeck Golf Venture, LLC
 Ms. Blaine Trump
 Stone Hill Manor II, LLC
 The Trust for Public Land

Mr. and Mrs. Paul Trusz
 Mr. Edward Tulin and Mr. Nicholas Wilson
 Mr. and Mrs. James Turino
 Turkey Hollow, Inc.
 Mr. Thomas Uger
 Mr. and Mrs. Jeffrey Urwin
 Mr. Robert Usdin
 Mr. and Mrs. Fred Valentine
 Mr. Tompkins Van Rensselaer
 Verbank Hunting and Fishing Club, Inc.
 Mr. and Mrs. Robin Vince
 Mr. and Mrs. Steven Vincent
 Mr. Frank Vosburgh -
 Kesicke Farm Cattle, Inc.
 Mr. and Mrs. Robert Vuillet -
 Sunnyside Farm, LLC
 Ms. Heidi Walker and Mr. Peter Pfabe
 Mr. and Mrs. Thomas Wallin
 Ms. Andrea Walton
 Mr. Ali Wambold and
 Ms. Monica Gerard-Sharp
 Mr. and Mrs. George Wantz
 Mr. Kevin Warren and
 Ms. Carmelina Cerrone
 Weantinoge Heritage Inc.
 Mr. and Mrs. David Webb
 Mr. and Mrs. J.C. Webb
 Mr. and Mrs. Kaare Weber
 Mr. and Mrs. Larry Wechsler
 Dr. Carnes Weeks
 Mr. Nate Weeks, Jr.
 Mr. Alain Wertheimer
 West Park City Trust
 Mr. Richard Whalen
 White Rock Farm Trust
 Mr. and Mrs. Frederick Whitridge
 Mr. and Mrs. Nigel Widdowson
 Mr. and Mrs. Jeffery Wieland
 Mr. and Mrs. Robert Wilder
 Mr. and Mrs. Ross Williams
 Williams Land & Cattle LLC
 Mr. James Wilmarth
 Mr. and Mrs. Jay Wilmarth
 Mr. James W. Wilson
 Mr. Simon Winchester
 Winnakee Land Trust, Inc.
 Mr. Adam Wolfensohn and
 Ms. Jennifer Small
 Wolfram Hanchett Bates, LLC
 Ms. Andrea Woodner
 Mr. Edward Woods
 Ms. Mary Woods
 Mr. Sean Woods
 Mr. Daniel and Mr. Emanuel Yacab
 Mr. and Mrs. Mark Yale
 Ms. Susan Yanow and Mr. Philip Sego
 Mr. and Mrs. Eames Yates
 Mr. Ilan Zechory and Ms. Audrey Gelman

Supporters

Trustees of the Land \$10,000 and up

Candy and Lex Anderson
James Augustine
Kathleen Vuillet Augustine
Mr. and Mrs. Steven Benardete
Nicholas Bienstock and
Moirra Burnham
Candace Browning-Platt
Mr. and Mrs. Russell L. Carson
Mr. Hugo Cassirer and
Ms. Sarah Buttrick
Andrea and Guillaume Cuvelier
Kathleen and John Dunagan
Mr. and Mrs. Wolcott B. Dunham, Jr.
Kathe and John Dyson
Hal Epstein
Patricia and Alex Farman-Farmaian
Jodie and Andrew Fink
Deban and Tom Flexner
Penny Gorman
Nichola and Peter Gray
David and Nan Greenwood
Andrew and Barbara Gundlach
Mrs. David R. Hathaway
Mr. and Mrs. William R. Hettinger
Ms. Karen M. Karlsrud and
Mr. Raymond C. Mikulich
Mr. and Mrs. Thomas W. Keesee
Ms. Fernanda Kellogg and
Mr. Kirk Henckels
Mr. and Mrs. Ragnar Knutsen
Jill and Peter Kraus
Claire and Chris Mann
Perrin and Gregory Martin
Mr. and Mrs. Timothy Mayhew
The Merison Family
The Mershon Family
Jeremy and Joyann Michael
Phillip Mills and Taraneh Tavana
Deanna and Steve Mulligan
Joyce and George Mykoniatis
Mr. and Mrs. Thomas L. Newberry
Marta and Fernando Nottebohm
Jennifer and Erik Oken
Arnold S. and Madaleine Penner
M. Taylor Pyne
Terry and John Regan
Eric W. Roberts
J. Kevin Smith and Marc MacLean
Alison Speer and Alexander Reese
Ms. Jennifer P. Speers



Dorothy W. Sprague and
William J. Benedict, Jr.
Mr. and Mrs. John Sprague
Sarah and David Stack
Mr. and Mrs. William W. Stahl, Jr.
Peter and Anna Tcherepnine
John-Lansing J. Teal
Mr. and Mrs. Oakleigh Thorne
Mrs. Oakleigh B. Thorne
Barbara Tober
Helen and Michiel van der Voort
Olivia van Melle Kamp
Mr. and Mrs. Alan B. Vickery
Mr. and Mrs. Robin A. Vince
Fred and Trina Whitridge
Mr. Robert Wilder

Trustee of the Land

Foundation Gifts

The Alexander Bodini Foundation
Katharine Bontecou Charitable Trust
The Buchan Foundation
The Buchanan Family Foundation
Helen R. Buck Foundation
The Children's Trust
Robert K. Johnson Foundation
Anna-Maria and Stephen Kellen
Foundation

Legacy Gifts

Joyce Alpi
Estate of Nancy Perkins

Grants

Land Trust Alliance
Millbrook Tribute Garden
The PCLB Foundation
The Walbridge Fund

Benefactors \$5,000 to \$9,999

David Anderson
Francis Bartow
Dr. and Mrs. Stephen M. Clement
Katie Cusack
Mr. J. David Donahay, Jr.
Mr. George Eberstadt and
Ms. Cynthia Young
Shepard and Jane Ellenberg
Massimo and Chiara Ferragamo
Jane and Raymond Gizzi
James Gorman
Mr. and Mrs. William F. Henze, III
Paul and Karin Kingsley
Karen and John Klopp
Elissa Kramer and Jay Newman
Katherine and Frank Martucci
Kelly A. Morgan
James Muncey
Janet and David Offensend
Ann Marie Pallen
Eve Propp
Mr. and Mrs. Bryant Seaman, III
Mr. and Mrs. W. James Tozer, Jr.
Andrea W. Walton
Mark Wiedman and Dana Kirchman

Foundation Gifts

The William J. and Dorothy K.
O'Neill Foundation

Business Community Sponsor

Bank of Millbrook
Harney & Sons Fine Teas
Peter Pennoyer Architects

Guardians \$2,500 to \$4,999

Jon H. Adams, Esq.
Ms. Sherrell Andrews and
Mr. Rob Kuhbach
Jon Banner
Ms. Karen Bechtel
Marjaleena and Jonathan Berger
Kristen and Jim Bernard
Joan and Charles Blanksteen
Lawrence and Ashley Buterman
Peter and Diane Chapman
Mr. and Mrs. Farnham F. Collins
Helen and Everett Cook
Wendy Curtis
Marion and Willem de Vogel
The Durst Organization
Irina and Roger Erickson
Ms. Jacqueline Flake and
Mr. David Dase
Cory Gnazzo and Fred Erker
Mr. Thomas Hitchcock, III
Houlihan Lawrence
Pamela Howard
Edwina and James Hunt
Stephanie Hunt and Stephen Trevor
Jane and Richard Kresch
Mr. and Mrs. E. Deane Leonard
Mr. and Mrs. Jeffrey Lovinger
Mary and Bill Lunt
Simone and Chris Mailman
Francois and Ketty Maisonrouge
Patrice and Stephen Masri
Nick and Lynn Nicholas
Robert and Encarnita Quinlan
Coco and Tim Quinlan
Paula Redmond and Toby Collins
Lizzie and John Robertshaw
Lolita and Simon Roosevelt
Mary and Patrick Scanlan
Mr. Gilbert P. Schafer, III
Dr. and Mrs. Paul H. Schwartz
Mr. and Mrs. Ottavio Serena di Lapigio
Eliza Thorne and Michael Barnello
Andrea van Beuren and Roger Kass
Sarah and Dixi von Maltzahn
Cynthia C. Wainwright and
Stephen Berger
Ross and Di Williams

James and Amelia Wilson
Mr. and Mrs. Mark Winmill

Foundation Gifts

The Daniel and Estrellita Brodsky
Family Foundation
Lovinger Family Foundation

Grants

Vassar College Community Works
Program

Business Community Sponsor

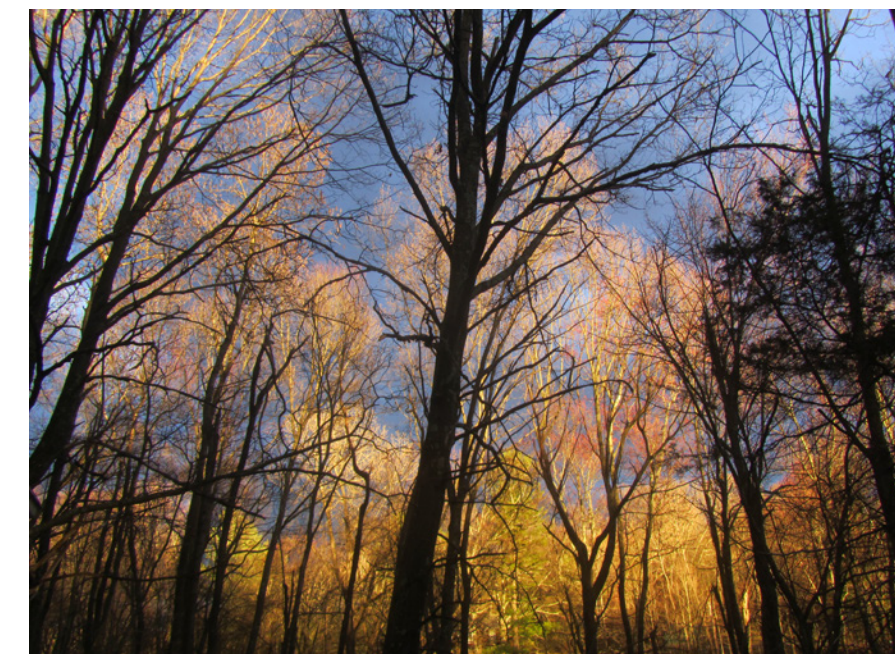
Special Events Sponsor

Millbrook Equine
Mutual of America
Paula Redmond and Corcoran
Country Living
Zimmer Brothers Jewelers

Patrons \$1,000 to \$2,499

Anonymous
Susan Abuhaidar
Mr. and Mrs. Ronald R. Atkins
Aldo A. Badini
Dr. Howard T. Bellin
Jane Berkey
Stephanie Bernheim
Lisa and Hob Brown
Mrs. Arnold Bucove
Mrs. Robert J. Chamine
Lillian and Robert Chapman
Peter Charlap and Shawn Pratt
Rosemary and Barry Chase
Susan Crossley and Joan Redmond
Julia Descoteaux

Yasaman and Vuk Djunic
Leslie Farhangi and John Tuke
Michele L. Ferraro and
Kathleen C. Weathers
Tracy and James Florack
Melanie and Jordan Fowler
Parker Gentry
Mr. and Mrs. Max Goodwin
Marylou and Sam Gordon, Jr.
Lorna and Lawrence Graev
Jeffrey Gural
Leslie and Andrew Heaney
Michael Jacoff and Jeanne Vanecko
Alison and Matthew James
Mr. and Mrs. Stephen C. Kaye
Brad and Barb Kendall
Hopeton K. Kimball
Don and Gay Kimelman
Catherine Kinsey and
Clinton I. Smullyan, Jr.
Meghan and Adam Klopp
Scott Koster and Christine Madden
Mr. Raymond Learsy
Laurence and Michael Levin
Linda D. Lewis
Lorenzo L. Lorenzotti
Linc and Ruthie Lyman
Philip Mactaggart
Alexander Maldutis
Alison and Michael Marsal
Jamie Marshall and Greg Wicander
David and Maggie McGirr
Patricia and Gregory Mendenhall
Ruth Migliorelli
Ms. Evelyn M. Morrow



Joshua Nelson and Gray Scott
 Robert A. Ouimette
 Florence Peyrelongue and
 Jose Luis Guerra
 Mr. Bruce Phillips and
 Ms. Joan Feeny
 Jeffrey and Deborah Pollock
 Shawn B. Pratt, Esq.
 Elise M. Quasebarth and
 Steven A. Neil
 Sarah and Alexander Saint-Amand
 Vicki and Yuri Salnikoff
 Libellule and Russell Sarachek
 Michael Sasse
 Theodore Schiffman and Manja Lissy
 Pamela Scott and Phil Balshi
 Henry and Kathy Smedley
 Mila and Chris Tewell
 Mr. and Mrs. Michael B. Trimble
 Thomas and Bonnie Uger
 Donna Verrilli
 Mr. and Mrs. David Webb
 Alain Wertheimer
 Philip and Georgina Weyhe
 Kim and Jeff Wieland
 Carey and Jane Winfrey
 Jacques Ya Deau and
 Caroline Benveniste
 Jackie and Mark Yale

Foundation Gifts

May Foundation

Business Community Sponsor

Special Events Sponsor

The Lantern
 Lime Rock Park
 Precision Auto Storage LLC
 Pepe Auto Group/Mercedes-Benz
 of White Plains

Sponsors \$500 to \$999

Anonymous (2)
 Ms. Loretta Alden
 Sara Allen
 Vincent and Ashley Andrews
 Harry W. Baldwin
 Suzanne and Fred Battenfeld
 Gary and Carole Beller
 Marco and Elizabeth Bellin
 John D. and Hilary Block
 Mr. and Mrs. Timothy M. Bontecou
 Matthew and Elizabeth Borsch
 Margaret and David Bova
 Adam Brandow and

Megan Brandow-Faller
 Lelee Brandt and Tom Francoline
 Philip and Julia Brown
 Steve Bruman and Tom Ambler
 Mr. and Mrs. Michael C. Burdis
 Marie-Claude and Fred Butler
 Anne P. Cabot
 Allison Canton
 Wendy Carduner
 Leah Charlesworth and Brian Schartz
 Marie-Laure N. Collins
 Mark and Mary Collins
 James and Lea Cornell
 Judy and Archibald Cox, Jr
 Susan and Joe Credle
 Andrew and Jodi Dady
 Alfred F. Daiboch and
 William H. Reinert
 Marina Dayton and
 Jasper van Santen
 Lori and George Decker
 David Dembo and Sarah Jackson
 DLC Staff
 Jackie and Nick Drexel
 Constance I. Duhamel and
 Carolyn B. Handler
 Jennifer and Doug Dundas
 Ed Herrington, Inc.
 Jay Erickson
 Gloria and Carey Fieldcamp
 Gerry and Ingrid Fields
 Fishkill Farms - Josh Morgenthau
 Ross Garon and Anna Suh
 Joshua Ginsberg
 Edith Greenwood
 Mark Grigalunas and
 Christopher Bazzani
 Jens Peter Hansen and
 Elena Feliciano
 The Hargraves Family
 Abby and Ardian Hasko
 Heather Croner Real Estate
 Sotheby's International Realty
 Harry H. Hill
 Ken Holzberg and Tom Kopfensteiner
 Mr. Post Howland
 Molly and Scott Hurley
 Michael Jeffers
 Sarah T. Jones
 Alex Kania and Charlotte Greenough
 Bob Kaus
 John and Clara Kemmerer
 Ms. Diana Niles King
 Susan Koff
 Kathy Landman
 Doug and Torrie Larson

Michael Lewin
 Dana and Dieter Lucas
 Mr. and Mrs. James A. Mack
 Alexandra Marshall
 Lianne McNally
 Sam Metzger and Caroline Geerlings
 Millbrook School
 Janice and Steve Miller -
 Miller Foudation
 Jacqueline Montfort
 Dr. Paul Mountan
 Bernadette Murray and Bran Raskovic
 Lynn and William Nolan
 Jane and David Parshall
 Charles and Barbara Pierce
 Michael Poulin and Robert DeFrank
 D. Miles Price
 Thomas L. Pulling
 Paul Quartararo
 Doug Ramey
 Emily and Gil Raviv
 Maurice Regan - Jacks Farm
 on the Hill LLC
 Daphne and William Richards
 Christopher Frederick Robins
 Shannon and John Robinson
 David and Robyn Rosenberg
 Mr. John Royall
 Rebecca and Chris Rutherford
 Mr. and Mrs. Michael J. Santini
 Georgina Schaeffer
 Daniel* and Elizabeth Schechter
 John and Wendy Schmidt
 Charles and Margaret Schneible
 Harvey Schussler
 Andrew and Patricia Sousloff
 Abigail and Julian Steinberg
 Alison Stolzman
 Emma Sweeney and Martin Lewis
 Corinne and Doug Tardio
 David Thieringer
 Becky Thornton
 Ann and John Tinker
 Mr. and Mrs. Wolfgang Traber
 Robert Usdin and Ruth Cohen
 Carol and Fred Valentine
 Julie and Andrew Vander Veen
 Henrik Vanderlip
 Jim and Nelli Voorheis
 Ginny and Tom Wallin
 Dorsey Waxter and
 Richard Armstrong
 Richard and Christine Weaver
 Dennis Wedlick and Curtis DeVito
 George and Susan Whalen III
 Mr. William T. Wilson III



Christina Österlund Wood and
 Ned Wood
 Christina and Daniel Zelman

Protectors \$250 to \$499

Abel's Trees
 Adams Fairacre Farms
 Armin and Lynne Allen
 Jonathan and Michelle Auerbach
 Leslie Barclay
 Assembly Member Didi Barrett
 Pat Beard and David Braga
 Charles and Barbara Becker
 Tony Bienstock
 Kathryn Bigelow
 Patricia Bonis and Mitchell Adelstein
 Bartle Bull
 Craig Chesley and Eileen Naughton
 Warren and Barbara Cohen
 Bruce and Teresa Colley
 Elizabeth Comstock and
 Chris Travers
 Alice and Peter Coon
 Elisabeth Cord
 Sally D'Arcy and David Allen
 Sherry de Carbonnel
 Andrew Dietderich and
 Carina Liebeknecht
 Christina Dimitriadis
 Gael Doar and Lawrence Walsh
 Erin and Jonathan Downs
 Vicki and Mark Doyle
 David Duble
 Chris and Joy Dyson
 Mr. and Mrs. Richard L. Ellis

John and Nancy Elting
 Dianne Engleke
 The Farmer's Wife
 Samantha R.J. Free
 Victor Geraci
 Sarah and John Glaister
 Janine Gordon and Alvin Schechter
 Mark Graminski, PE
 Mr. and Mrs. Edward C. Hackett, III
 James and Anna Hall
 S. Beattie Hays Jr.
 Camilla Hellman, MBE
 Mr. and Mrs. Gary T. Herman
 John Hettinger/85 Shady
 Dell Road, LLC
 Glenn D. Hoagland
 Maryann Jordan
 Elizabeth and William Kahane
 Tara Kelly and Rodney Paterson
 Dr. Robert N. Kitchen
 Chris and Claudine Klose
 Alan Kornberg and Harold Koda
 Peter Kuhlmann and Diane Gilmour
 Candace and Lou Lewis
 Mr. and Mrs. F. Lee Liebolt, Jr.
 Rima and Olivier Lordonnois
 Monte and Laurina Marder
 Douglas Maxwell and
 Christopher Dierig
 Susan Mercandetti and
 Richard Haass
 Chuca Meyer
 Molly Meyer
 Karen Meyerhoff
 Reid R. Miles

Todd Jay Mitty and Jung Min Lee
 Istar and George Mudge
 George J. Muller
 Laurie Niles
 Leslie Nilsson
 Suzanne Otis
 Sylvia Owen
 Michael and Nina Peek
 Stefan Peter and Mark Irizarry
 Jean and Tom Phifer
 Robert W. Pomeroy, III
 Jody Potter
 Bettina and Jamie Prentice
 Renee Price
 Brooke and Richard Rapaport
 Jorge J. Rodriguez
 Allan Rubenstein and Carole Postal
 Sana Sabbagh
 Savoy Landscape Construction
 Nancy Schaefer
 Lawrence Shapiro and Beth Ledy
 Elizabeth Shequine
 Karin Shrubsole
 Allen Staley
 Hank Stebbins
 Mr. and Mrs. Rockwell Stensrud
 The Stephenson Family
 Sarah Stephenson
 Gary Tannenbaum and Helen Mills
 Anita Tiburzi-Johnson
 Jim and Jan Utter
 Paula van der Geest
 Illiana van Meeteren
 Loretta Villani and Gary Handel

Marina Wambold
 Pamela and Kaare Weber
 Jan Dean Wechsler
 Jack Carnes Weeks
 Nate and Marion Weeks

Friends \$1 to \$249

Anonymous
 Claire Ackad
 Mr. William Adams
 Barbara Agren
 Roger Akeley
 Frederick E. Allen and
 Monica de Mane
 Janet Allison
 Steven Altman
 AmazonSmile
 Gregory Andracke and Linda Abrams
 Lisa and Amir Arbisser
 Therese Balagna
 Judy Behrens
 Raoul Bhavnani and Savitha Reddy
 Andrew and Mary Bolotowsky
 Oliver L. Brown
 Barbara Butler
 Mr. Paul W. Case
 Sarah Lyons Chase
 Sharon Churcher and Michael Taylor
 James Cole and Rachele Grieco
 William and Jenny Colman
 Steven Conway
 Mr. Dirck V. V. Coon
 Cornell Lab of Ornithology
 Christine Craig
 Mark Daisley/Glynwood Center
 Dorothy L. Distel

Marian and Jim Douglas
 Ed and Meg Downey
 Don and Sharon Duncan
 Naomi and Ben Eldredge
 Elizabeth Ely
 Heather Evans and Peter Tirrell
 Mr. and Mrs. Patrick V. Flanigan
 Karen and Rob Fracchia
 Dr. Sanford and Virginia Friedman
 Steve and Terry Froehlich
 Emily R. Fuller
 The Garden Club of Orange
 & Dutchess Counties
 Joan and Phil Gellert
 Jeffry A. Giardina
 Ann and John Gifford
 Nigel Gillah and Meredith Adler
 Suzanne Gillespie
 Anne C. Gillis
 Mary Gilroy
 Naomi Grabel and Neil Kutner
 Margery and Arthur Groten
 Mr. and Mrs. Eric P. Haims
 Jeffry Hoffman
 Joel S. Hoffman
 Steven Horowitz
 Mr. and Mrs. Robert G. Hottensen Jr.
 Valerie Hovasapian
 Maung Htoo
 Frank and Marie Iorio
 Michel E. and Patricia K. Jean
 Robert and Linda Kahn
 Peter and Jacalyn Kamenstein
 Paul and Edith Keck
 Erik Kiviatt
 Ms. Kathleen Knight

Dr. Sharon Daniel Kroeger
 Mark and Margaret Kuras
 Blake Landro
 Andrew Lane
 Mary Beth Lawlor
 Mary Leitch
 Chad Lewis
 Judie Mackie
 Patrick MacMurray and
 Patrick Trettenero
 Louis J. Maggio
 Robert L. Mahar
 Vivien G. Malloy
 David and Elizabeth Mandy
 John and Barbara Marmillo
 Stephanie W. Mauri*
 Delia McGovern
 Hamilton and Helen Meserve
 Alison Meyer
 Allan and Barbara Michelin
 Deborah Montgomery
 Darryl Morrison
 Ms. Laurie Nussdorfer
 Oblong Books and Music
 Dr. and Mrs. James Park
 Drs. Jan Robinson Peterson and
 Alan Peterson
 Mr. and Mrs. Samuel P. Phelan
 Janet Pickering
 Mr. and Mrs. Alexander Podmaniczky
 Richard and Maria Polhemus
 Mr. and Mrs. Carl J. Popp
 Elsie Puglisi
 Frederic and Penny Putnam
 Mr. Joel S. Russell
 Steven Saidenberg

Simon Sidamon-Eristoff
 John and Deborah Singler
 Eleanor and Anthony Sloan
 Mr. and Mrs. David Sloan
 Paula and James Smith
 Timothy F. Sohn
 Michael Sterthous
 Gretchen Stevens and
 Russ Immarigeon
 David Stewart
 Mr. and Mrs. Allan Streichler
 Betty J. Tabor
 Mary Torras
 Joseph and Leigh Toth
 Joanna Underwood
 Ellen Verdibello
 Jane A. Waters and Peter Caldwell
 Lisa and Gordon Weiss
 Henry H. Westmoreland and
 Charles H. Milligan
 George T. Whalen, Jr.
 Ann D. Wilkinson
 Andrea Woodner and Allison Kavey
 Charles and Lynn Young
 Alice Yurke and Robert Davis
 Martha and Murray Zimiles

In Memory of:

Deborah S. Baldwin
 By: Mr. Harry W. Baldwin
 Ilya and Meta Bolotowsky
 By: Andrew and Mary Bolotowsky
 Lauren Gallagher
 By: Claire Ackad
 Anne Htoo
 By: Maung Htoo
 Elizabeth Mavroleon
 By: Marian and Jim Douglas
 By: Massimo and Chiara Ferragamo
 By: Mary Gilroy
 By: Mr. William T. Wilson III
 By: Charles and Lynn Young
 Barbara Meyer
 By: Alison Meyer
 By: Chuca Meyer
 Dale Mountan
 By: Dr. Paul Mountan
 Nancy Perkins
 By: Anne P. Cabot
 By: Cornell Lab of Ornithology
 By: Glynwood Center
 By: Karen Meyerhoff
 By: Becky Thornton
 Nancy Malloy Winkler
 By: Vivien G. Malloy



***In Memoriam:**

Mary Bartow 1956 - 2022
 Hadley Ford 1935 - 2022
 Gary Gambuti 1939 - 2022
 Elizabeth Mavroleon 1947 - 2022
 Stephanie W. Mauri 1936 - 2022
 Benita Miglorelli 1933 - 2022
 Nancy Perkins 1927 - 2022
 Eleanor Pulver 1926 - 2022
 Albert Ratschki 1927 - 2022
 Daniel Schechter 1942 -2023

In Honor of:

Jeremiah T. Carroll
 By: Linda D. Lewis
 Zoe Evans
 By: Heather Evans and Peter Tirrell
 Hall and Mandy Families
 By: The Hargraves Family
 Erin Hoagland
 By: Glenn D. Hoagland
 Betsy Shequine
 By: Bernadette Murray and
 Bran Raskovic
 Becky Thornton
 By: DLC Staff

Legacy Society

Barbara J. Agren
 Sara Allen
 Kathleen Vuillet Augustine
 Mr. and Mrs. Steven Benardete
 Anne Briggs
 Mr. and Mrs. Everett Cook
 Lawrence G. and Lorna H. Graev
 Mrs. David Hathaway
 Nancy H. Henze
 Scott and Molly Hurley
 Fernanda M. Kellogg
 Tara Kelly
 Mr. and Mrs. George McLaughlin
 Charles Milligan
 Mrs. Marta Nottebohm
 M. Taylor Pyne
 Eric W. Roberts
 Mr. and Mrs. David Rosenberg
 Georgina Schaeffer
 Jay Schwamm
 Peter Tcherepnine
 Becky Thornton
 Olivia van Melle Kamp
 Henry H. Westmoreland



Special friends who have left us generous bequests

- Joyce Alpi
- Julia Hall
- Nancy F. Perkins
- Arnold Rubinstein
- Molly Schaefer
- Faith Tompkins
- Everett Ken Weedon, Jr.
- Ralph and France-Helene Weindling

2022 Special Event Donors:

- Adams Fairacre Farms
- Alicia Adams Alpaca
- Bear Creek Farms
- British Sporting Arms
- Brookby Farm
- Hannah & Duke Buchan
- Cara Cara
- Cat Gentry Floral Design
- Peter & Diane Chapman
- Champetre – Michel & Patricia Jean
- Marie-Laure Collins
- Helen & Everett Cook
- The Farmer's Wife
- Salvatore Ferragamo
- Tony Henneberg
- Hillrock Estate Distillery
- Angela & Woody Keesee
- J. McLaughlin
- Kramer Portrait Studios
- Le Caviste
- Leslie Priggen
- Mashomack Preserve
- Merritt Book Store
- Millbrook Acupuncture/Therese Balagna
- Millbrook Yoga
- The Olana Partnership
- Orvis Sandanona
- Sharon Playhouse
- Stissing House
- Tamarack Preserve
- Tenmile Distillery
- Tory Burch
- Twin Brooks Farm
- Liselotte & Robin Vince
- Wassaic Project
- Wethersfield Estate and Garden



2022 Volunteers:

- | | | |
|------------------|--------------------|-------------------|
| Stacey Adams | Hem Hanaburgh | Kathy Pearson |
| Janet Allison | Breonna Hass | Andrew Pelletier |
| Ashely Alred | Oliver Hass | Nicole Possidente |
| Michael Bartsch | Barry Hayolasz | Elise Quasebarth |
| Micah Battner | Britt Hedrick | Emily Reid |
| Norma Baumann | Angela Helland | Barbara Romeo |
| Jeremy Bean | Mark Henshaw | Marilyn Rosen |
| Levi Beebe | Steven Horowitz | Ron Rosen |
| Judy Behrens | Charolotte Joseph | Betsy Rothstein |
| Steven Benardete | Wesley Joseph | David Rotti |
| Kristen Bernard | Lucy Kasofsky | Sarah Sartorini |
| Jill Borowski | Brett Klein | Oscar Schilling |
| John Borowski | Charlie Kusko | Joe Schmidt |
| Mary Borowski | Miles Lawlor | Gerard Sharp |
| Maryanne Brown | Jung Min Lee | Brian Sikora |
| Kelly Burdick | Clara Lerchi | Gregg Smith |
| Stuart Burns | Carina Liebeknecht | Josh Tank |
| Sirisha Chimmiri | Gary Lovett | Oakley Thorne |
| Michael Clark | Chris Madden | Will Thorne |
| Everet Cook | Ben Miller | Amy Titcomb |
| Helen Cook | Jan Miller | Jack Titcomb |
| Tory Burch | Todd Mitty | Patty Titcomb |
| Robert Cooze | William Moriarty | Kelsey Van Etten |
| Cameron Decker | Judith Muir | Marina Wambold |
| Bob Delland | Steve Neil | Dennis Wedlick |
| Liz Delland | Becky Nesel | Fred Whitridge |
| Curtis DeVito | Marta Nottebohm | Jim Wilson |
| Andy Dietderich | Dan Odell | Wendy Wolf |
| Emma Dietderich | Pat Odell | Andrew Yale |
| Dale Doster | David Pearson | Mark Yale |
| Leslie Gershon | | |

More than 46,000 acres now protected!

It is only through the generosity of our landowners, farmers, supporters, local communities, government agencies, and land trust partners that we can continue to help protect Dutchess County's watersheds, vital farmland, wildlife habitat, diverse ecosystems, and unparalleled scenic views for future generations.

2022 Projects

- Anderson
- Orvis Company Inc.
- Pomykala-Williams
- Town of Dover (Seven Wells)
- The Bontecou Preserve
- ▭ Towns
- DLC Protected
- Other Organizations

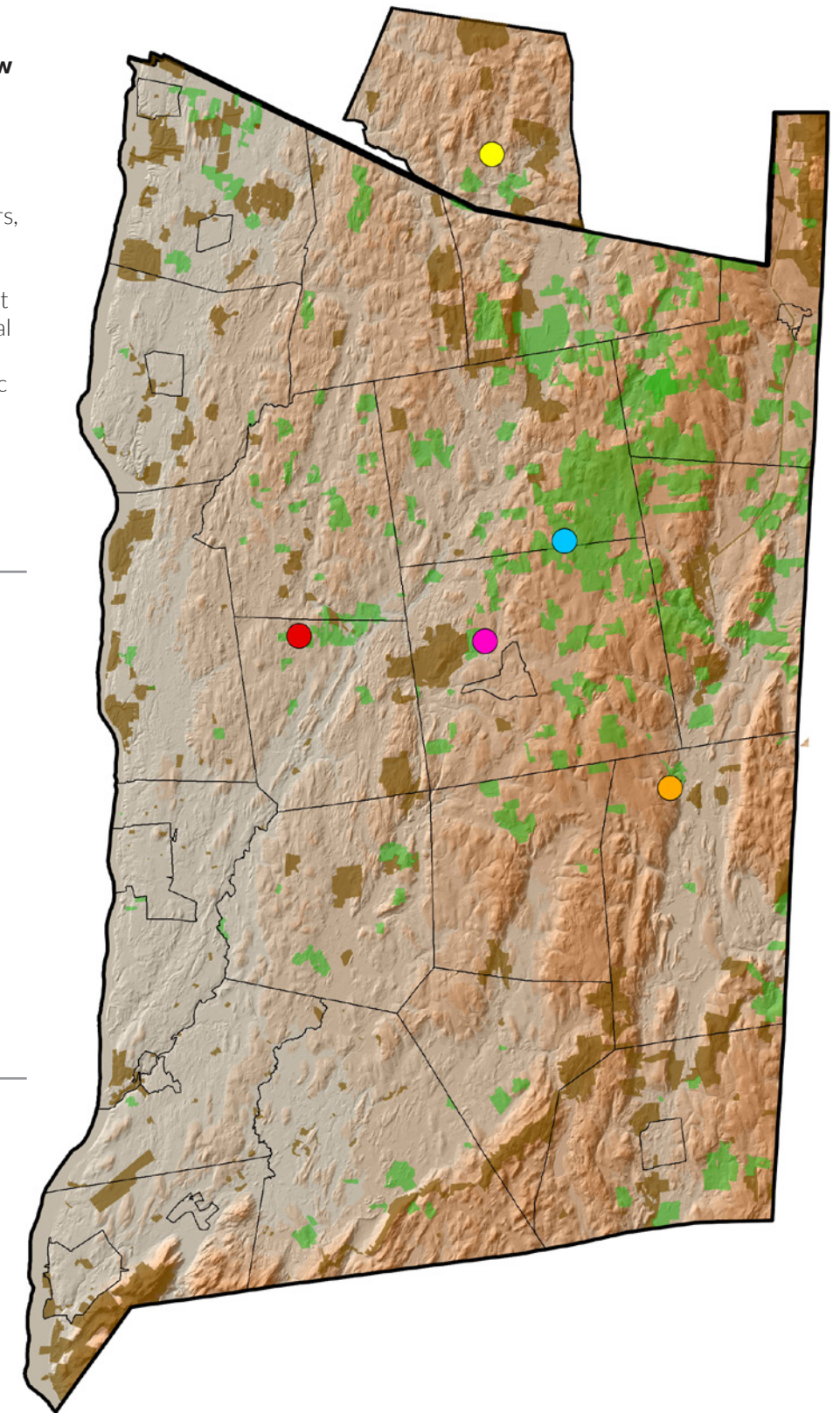




Photo Sarah Blodgett

PAULA SMITH DESIGNS INC.
paula@ridgebackfield.com
518.398.9500



PRINTED ON RECYCLED PAPER