

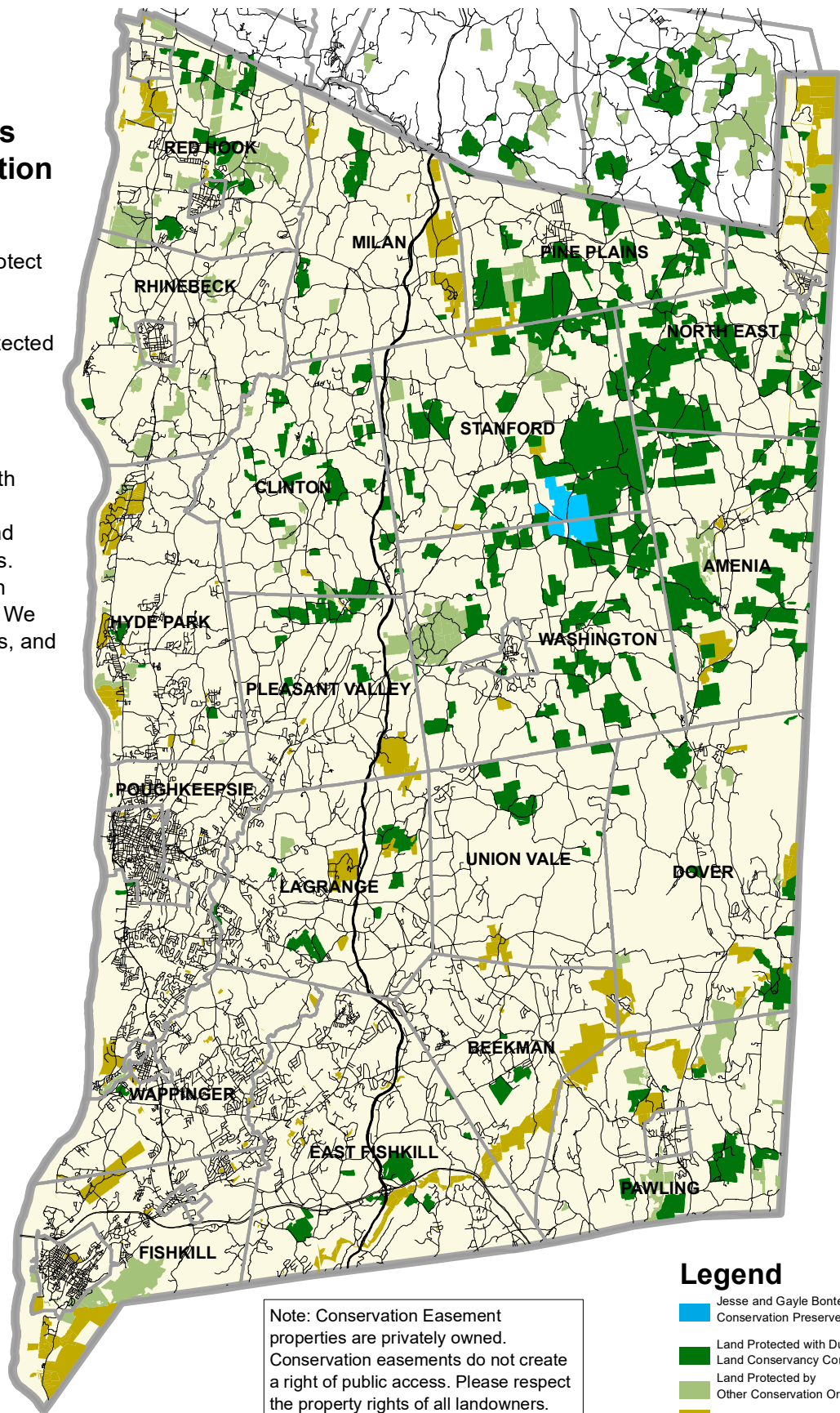
Protected Land in Dutchess County and Surrounding Areas

47,000 Acres Protected by Dutchess Land Conservancy (June 15, 2024)

Voluntary Land Preservation By Private Landowners Through Conservation Easements

Conservation Easements protect valuable farmland and open space, while keeping land in private ownership. Land protected by conservation easements stays on the local tax rolls.

Since 1985, Dutchess Land Conservancy has worked with 447 private landowners to preserve 47,000 acres of land with conservation easements. Over half of our conservation easements are on farmland. We also protect forests, wetlands, and critical wildlife habitat.



Note: Conservation Easement properties are privately owned. Conservation easements do not create a right of public access. Please respect the property rights of all landowners.

Dutchess Land Conservancy

P.O. Box 138
Millbrook, NY 12545
(845) 677-3002
www.dutchessland.org



Legend

- Jesse and Gayle Bontecou Wildlife Conservation Preserve
 - Land Protected with Dutchess Land Conservancy Conservation Easements
 - Land Protected by Other Conservation Organizations
 - Land Protected by Government
 - Roads
 - Municipal Boundaries
- 1 0.5 0 Miles