

# Protected Land in Dutchess County and Surrounding Areas

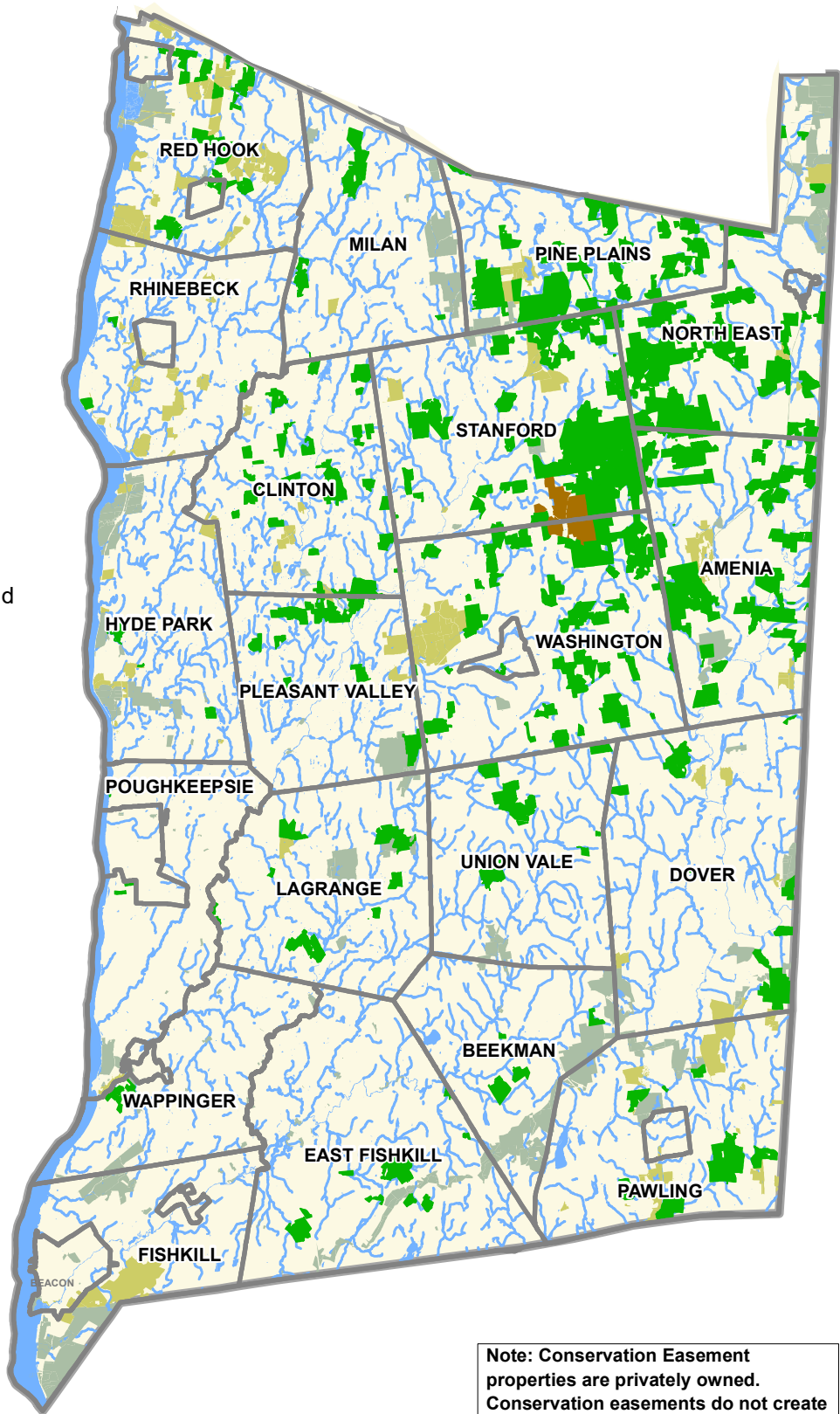
48,755 Acres Protected by Dutchess Land Conservancy

April 2026

## Voluntary Land Preservation By Private Landowners Through Conservation Easements

Conservation Easements protect valuable farmland and open space, while keeping land in private ownership. Land protected by conservation easements stays on the local tax rolls.

Since 1985, Dutchess Land Conservancy has worked with 458 private landowners to preserve nearly 49,000 acres of land with conservation easements. Over half of our conservation easements are on farmland. We also protect forests, wetlands, and critical wildlife habitat.



## Legend

- Jesse & Gayle Bontecou Wildlife Conservation Preserve
- Land Protected with Dutchess Land Conservancy Conservation Easements
- Land Protected by Other Conservation Organizations
- Land Protected by Government
- Roads
- Water Bodies
- Municipal Boundaries

**Note: Conservation Easement properties are privately owned. Conservation easements do not create a right of public access. Please respect the property rights of all landowners.**

## Dutchess Land Conservancy

P.O. Box 138  
Millbrook, NY 12545  
(845) 677-3002  
[www.dutchessland.org](http://www.dutchessland.org)

