

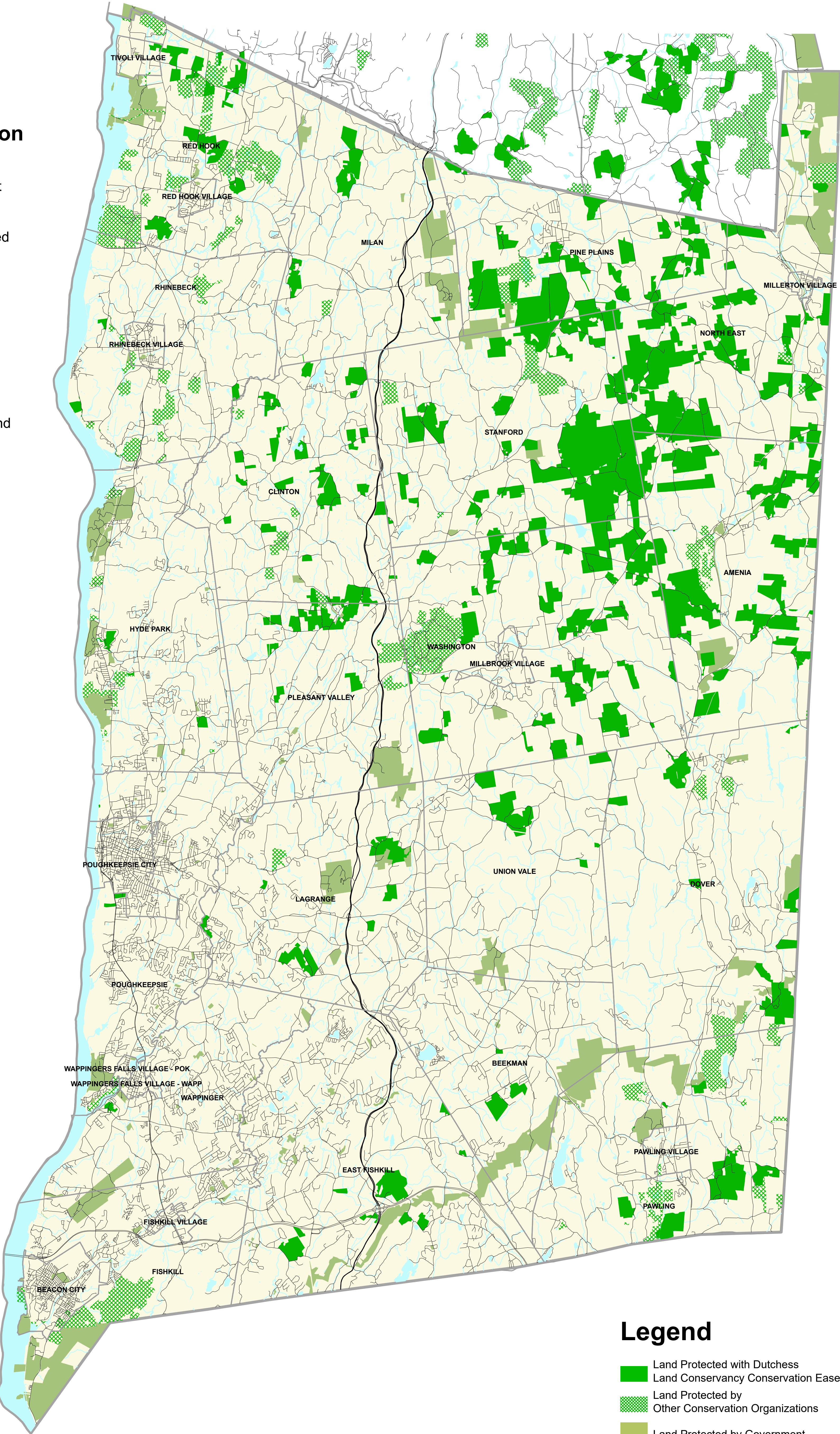
Protected Land in Dutchess County and Surrounding Areas

44,686 Acres Protected by Dutchess Land Conservancy (June 1, 2022)

Voluntary Land Preservation By Private Landowners Through Conservation Easements

Conservation Easements protect valuable farmland and open space, while keeping land in private ownership. Land protected by conservation easements stays on the local tax rolls.

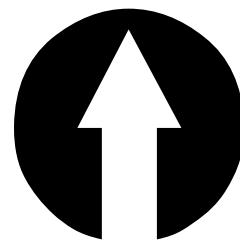
Since 1985, Dutchess Land Conservancy has worked with 433 private landowners to preserve 44,686 acres of land with conservation easements. Over half of our conservation easements are on farmland. We also protect forests, wetlands, and critical wildlife habitat.



Legend

- Land Protected with Dutchess Land Conservancy Conservation Easements
- Land Protected by Other Conservation Organizations
- Land Protected by Government
- Roads
- Water Bodies
- Municipal Boundaries

1 0.5 0 1 2 Miles



Dutchess Land Conservancy

P.O. Box 138
Millbrook, NY 12545
(845) 677-3002
www.dutchessland.org



Note: Conservation Easement properties are privately owned. Conservation easements do not create a right of public access. Please respect the property rights of all landowners.